

Alta Licensing Configuration Guide

Version 39

October 2014

Copyrighted Material, All Rights Reserved

Table of Contents

Preface	3
Conventions used in this guide.....	3
Requirements on hardware and OS	3
Installation	4
Installing Alta License Server	4
Configure license server	4
Configure system firewall.....	6
Install license service on Windows.....	6
Install license service on Linux.....	8
Connect to the license server	8
Updating software.....	11

Preface

Alta Licensing is a set of software tools for protecting software's distribution, copyright and usage. It offers protection to both the vendor and the user. This guide is written to provide a general introduction to the end users about how to set up and configure Alta Licensing so that the intended software can be used properly.

Conventions used in this guide

When addressing items in the user interface, following conventions are used in this guide.

[] menu or toolbar items

{ } dialog items, such as a button

In this guide the term “client software” refers to the actual software that Alta Licensing is protecting. This is the software that users actually obtained from their vendor.

Requirements on hardware and OS

Alta Licensing software can be installed on Windows or Linux. All OS should be 64 bit. As the administrator, on Windows system, please install “Microsoft Visual C++ 2008 Redistributable Package (x64)” that can be downloaded from microsoft.com, if it is not already installed. These Linux OS's, Fedora 14 and up, Ubuntu 11 and 12 and up, Redhat 5.5 and up, CentOS 5.5 and up, are supported. Other variations of Linux and Unix may be supported though they were not fully tested.

Installation on Mac computers is supported if it is requested.

Alta Licensing software only needs to be installed on a license server in an institution. It is recommended that a system 2GB RAM shall be used as the license server. A minimum of 100MB disk space is required for installation. The license server is a network computer running the license service. All client computers on the user side can connect to the license server to checkout a license to run the intended software. User's computer can also be configured as the license server.

Installation

As indicated in previous sections, Alta License Server needs to be installed first. Client software shall be installed based on its own instructions.

Installing Alta License Server

Install “Alta License” to a specified folder on the license server and one can find these files (and more) in the bin folder:

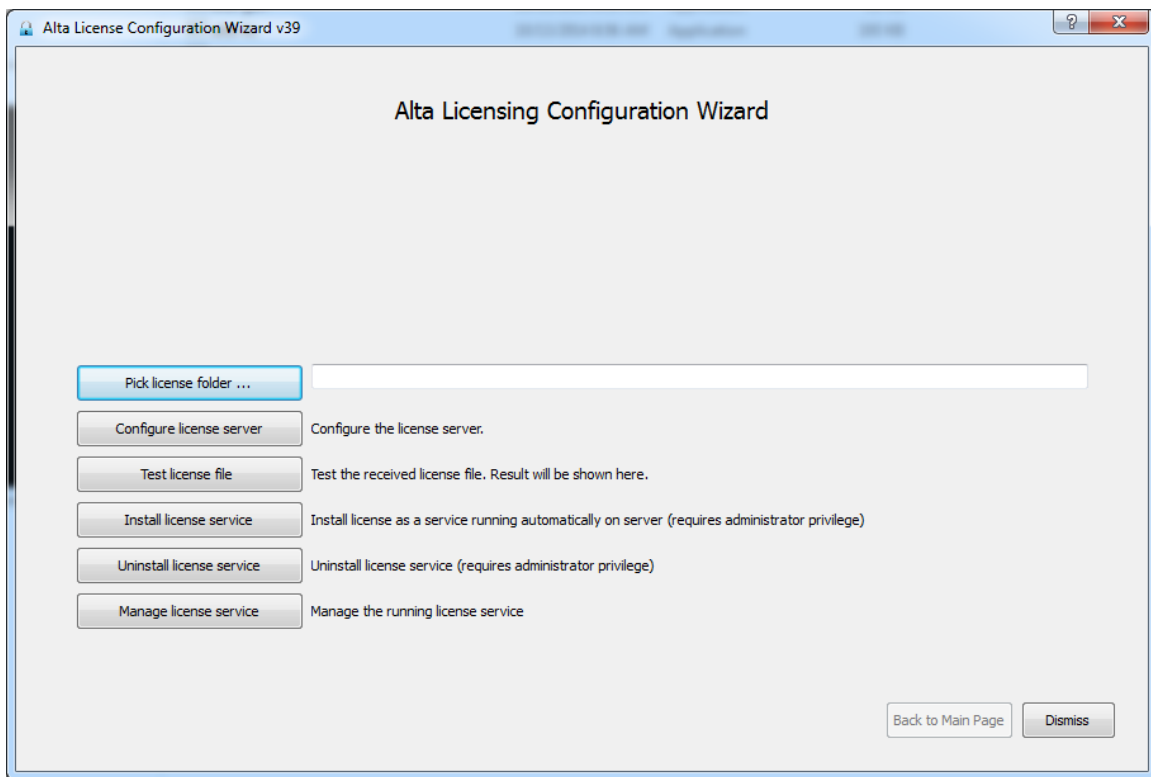
- | -- bin/
- | |-- alta-customer.exe
- | |-- alta-lic.exe
- | |-- alta-client.exe
- | |-- alta-lic-daemon (Linux only)
- | |-- alta-config.exe

Configure license server

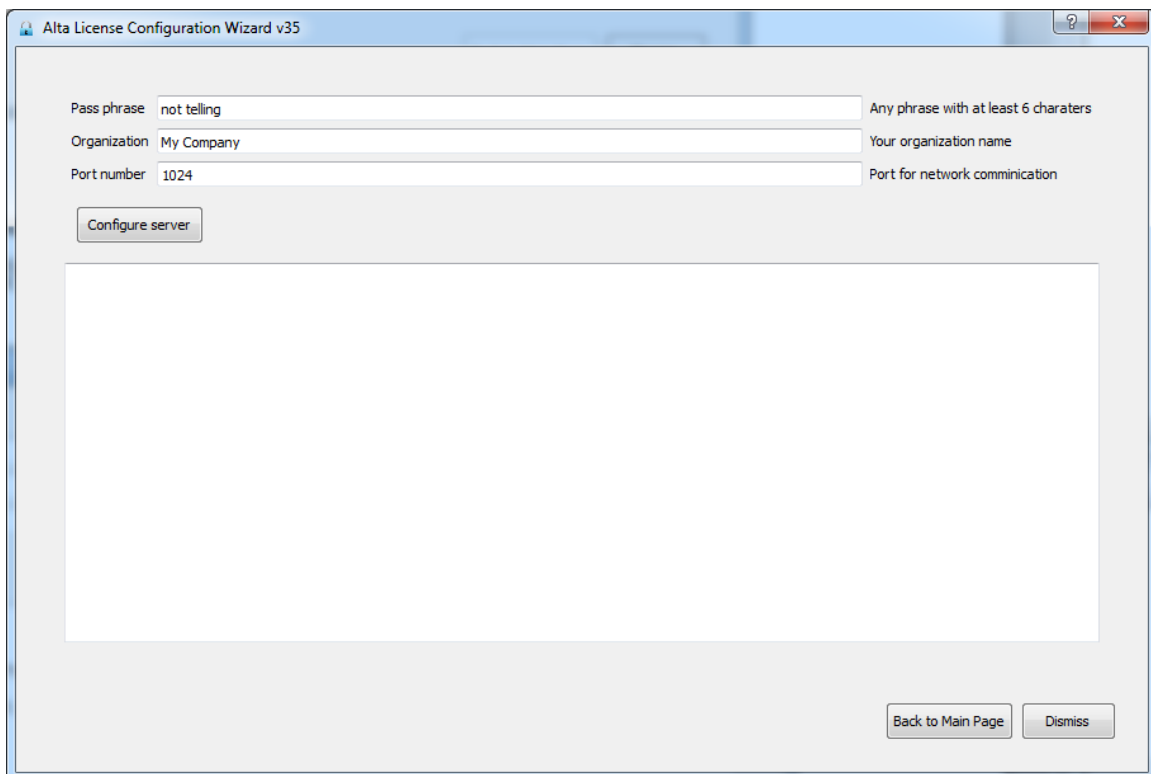
This section describes the necessary steps to start the network licensing.

1. In the Windows start menu, run “Alta Config” to configure Alta License Server. On Linux one can run alta-config from command line. “Alta License Configuration Wizard” will be shown. First click on {Pick license folder} to choose an empty folder for storing all licensing files. This folder will be referred as the license folder. It may be noted that the license folder shall not be moved or renamed when the license server is running.

Warning: the license folder shall not be inside “Program Files” on Windows or any other system folder on any operating system.



Next click on {Configure license server} and enter a pass phrase and your organization name, e.g. see below. Click on {Configure server}.



The license folder will contain these files and folders:

```
license_folder/
| | -- alta_customer.conf
| | -- alta_license.txt           (provided by vendor)
| -- key/
| | -- dh512.pem
| | -- server.crt
| | -- server.csr
| | -- server.key
| | -- server.key.secure
| -- log/
| | -- alta_lic.log              (generated later by license service)
```

2. A server configuration file “alta_customer.txt” is generated in the above step. Email it to your vendor and he/she will issue a license file named “alta_license.txt” according to your license terms. After you received the license file, place it in the same license folder in the above step.

Click on {Test license file} to validate the license file you received. Contact your vendor immediately if you see an error.

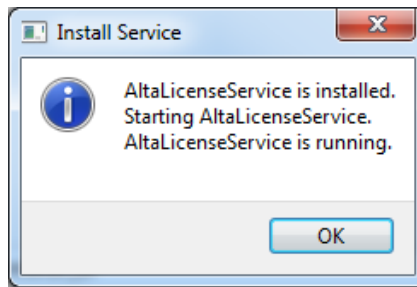
You will need to send the authorization file “server.crt” in the license folder to each client computer so that the client computer can connect the server. When client computers change, the administrator can regenerate these files with different pass phrases, and send an updated file “server.crt” to current client computers.

Configure system firewall

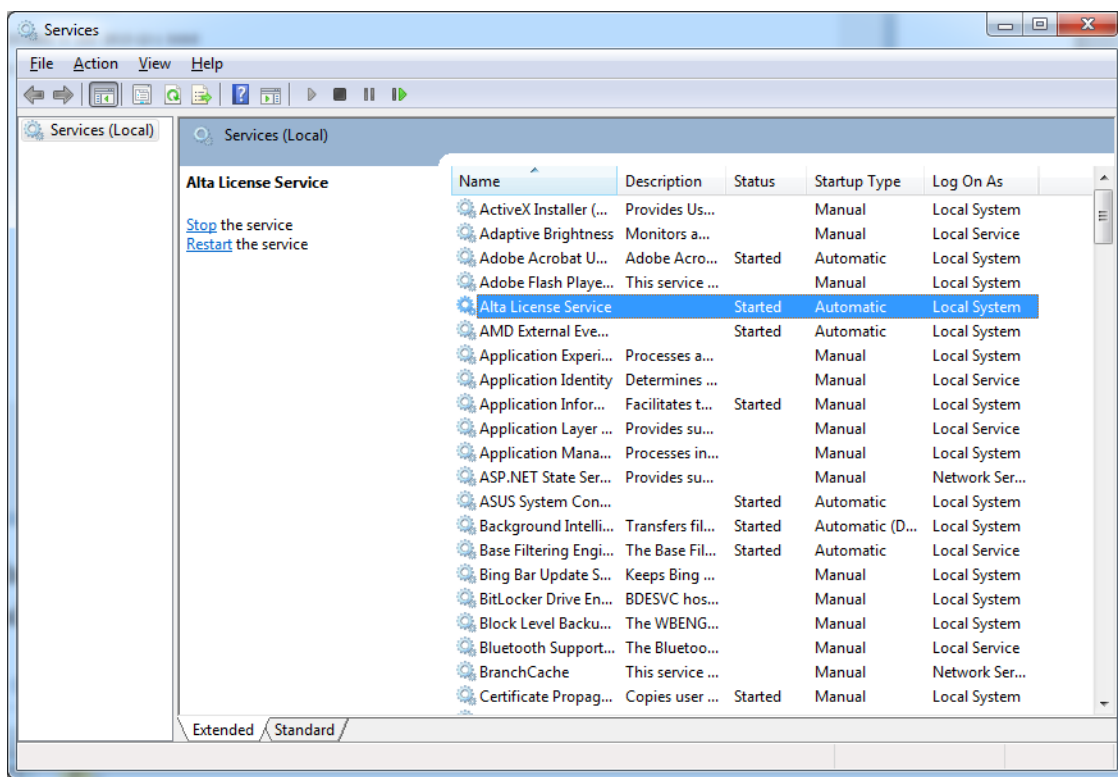
In your OS’s firewall settings, add an exception for “alta-lic.exe” to allow incoming connection. For example, on Windows 7, go to “Control Panel”, then “Windows Firewall”. Click on “Allow a program or feature through Windows Firewall”. In the next window click on the “Allow another program” and browse to “alta-lic.exe”.

Install license service on Windows

Click on {Install license service} in “Alta License Configuration Wizard”. If the message box below shows up “Alta License” is all set.

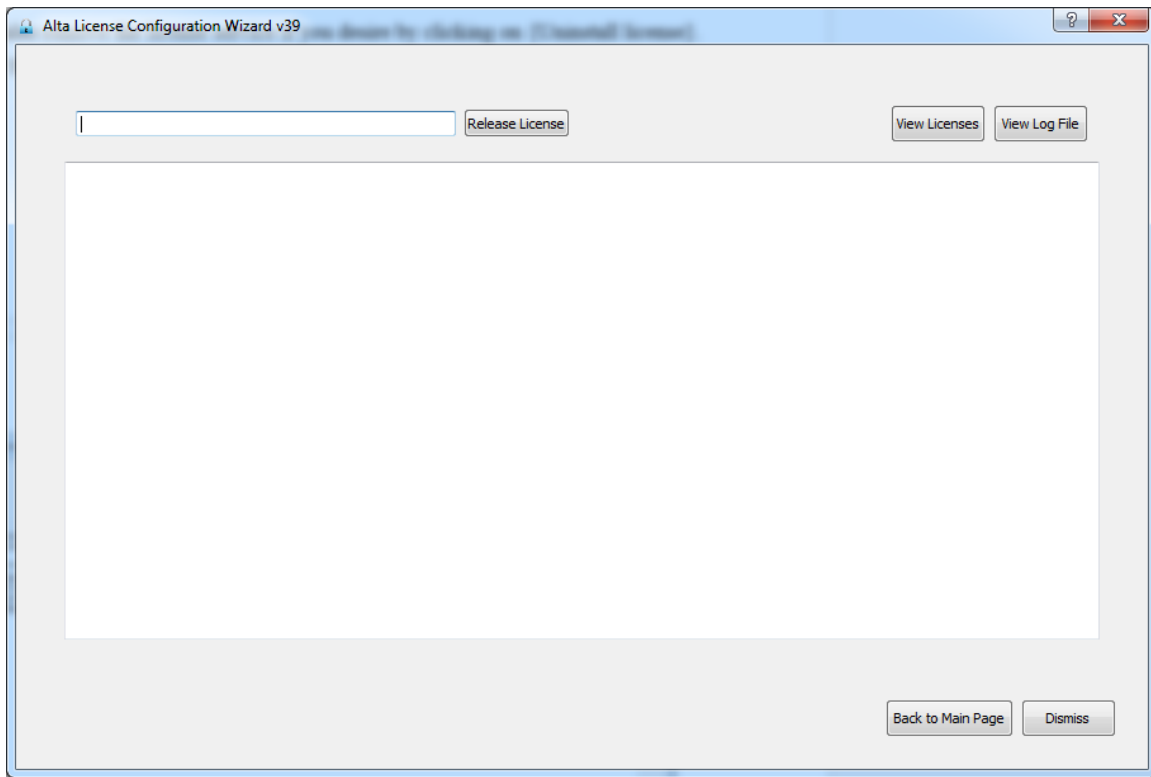


To verify the license server is running, type and run “Services.exe” in “Search programs or files” in the Windows start menu. A service named “Alta License Service” should be seen in the list, as shown below. It may be noted that “Alta License Service” is installed on the “Local System” account. It will run automatically after the server computer reboots.



You can also remove the license service if you desire by clicking on {Uninstall license} on Windows. This must be performed as administrator as well.

Clicking on {Manage license service} and the wizard dialog will be shown as below. Click on {View Log File} to see the log file generated by the current running license service. Contact the vendor if you see an error message.



Clicking on “View Licenses” will display the license consumption. Select a line of a license that is being used and right click and select {Release} will release this license.

Install license service on Linux

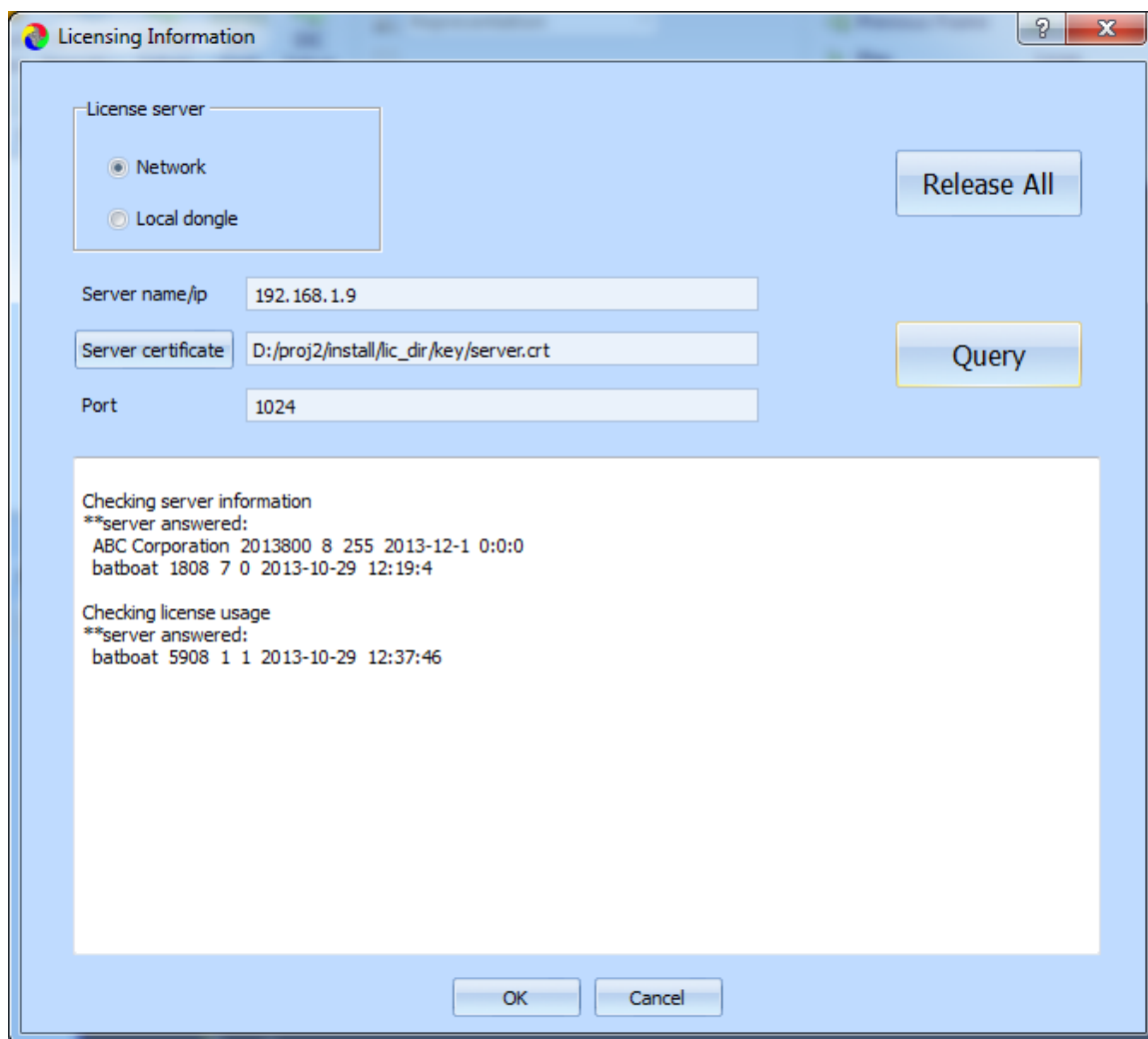
On Linux, click on {Install license service} (as root) and a script named “alta-lic” will be installed in /etc/init.d. Now the license server should be up and running. To verify, you should be able to find the process “alta-lic” running on your system. A log file “license_folder/log/alta_lic.log” should have been created. There should be no errors or exceptions in this file. Contact the vendor if you cannot accomplish these steps.

To manually start the service on Linux type “service alta-lic start” in a terminal. To uninstall, simply remove the file /etc/init.d/alta-lic.

Connect to the license server

In the client computer, first make sure “server.crt” is saved at a proper location. Run the client software and select [Licensing] in the menu (or other menu according to the instructions given by the client software). A new dialog as shown below comes up. Choose “Network” as

the license server type, and enter the server's name or ip address. If your server is the same as the client computer, use "localhost" as the server name. The port number is 1024 and do not change it unless your system administrator tells you to. Click on {Server certificate} to pick the "server.crt" file. You do not need to change the server information on this dialog every time unless the server has changed.



Click on the {Query} button and the client software will start to query server information. If no error is displayed, Alta Licensing is now working. Press the button {Release All} in the licensing dialog, the license server will release all licenses checked out by this computer. This is useful when the client software was abnormally terminated previously and a checked out license is being held up. If you have another job running on this computer, they will reinstate their licenses automatically later. However, if all licenses on the server are immediately checked out by other new jobs, the running jobs may lose their licenses permanently and hence terminate.

Some client software may not have a graphical user interface. In that case Alta Licensing can still work. Please refer to appropriate client software's manual about the details.

Updating software

When updating Alta Licensing Server software, the license folder where the machine information and license information are stored shall be kept intact, unless there is a compatibility issue. The license file does not need to be regenerated unless your vendor tells you to.

On Windows first uninstall Alta License from the {Alta Configuration} dialog. Then reinstall the new license server software. Run {Alta Configuration} dialog. Set the license directory to your existing license folder if it's not carried over automatically.

On Linux one does not have to uninstall the software first. Simply go through the installation process again and make sure the license folder is carried over.